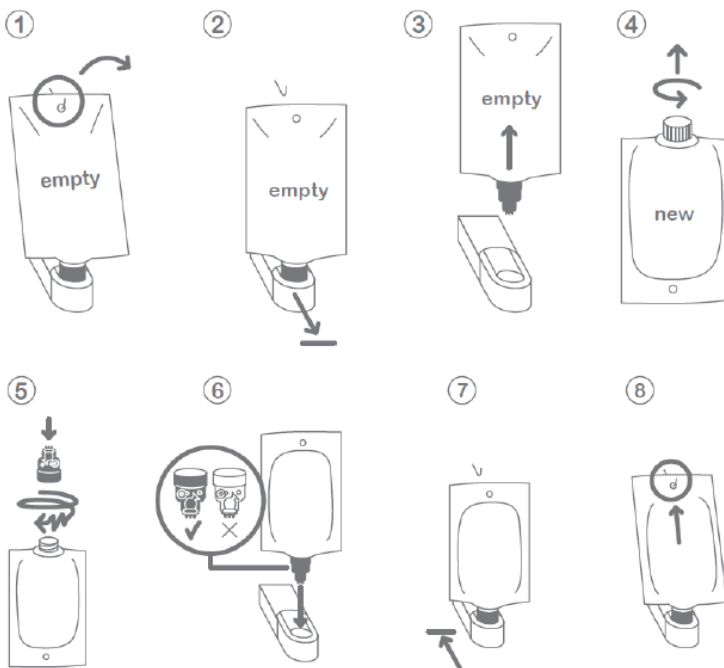




Instructions for use

Soap pouch and SMU (Smart Mixing Unit)



1. Unhook the empty pouch.
2. Pull the docking station open.
3. Take the empty pouch out.
4. Unscrew the cap of the new pouch.
5. Screw a new SMU onto the new soap bag connector until it snaps. Make sure to tighten properly the SMU. You should hear four clicks.
6. Put the new pouch in the docking station with the black side in front.
7. Push the docking station closed until you hear the “click”.
8. Hang the pouch onto the back wall.



The soap

Technical Data

Composition: Aqua, Sodium Laureth Sulfate, Sodium Chloride, Cocamidopropyl Betaine, Glycol Distearate, Laureth-4, Disodium Laureth Sulfosuccinate, Prunus Avium Flower Extract, Benzophenone-4, Polyquaternium-7, Styrene/Acrylates Copolymer, Propylene Glycol, Sorbitol, Citric Acid, Parfum, Phenoxyethanol, Potassium Sorbate, Sodium Benzoate, CI 16255.

POA (Period of use after opening): 6 months



| Inspection characteristic | Method | Specification |
|----------------------------------------------------|-----------|------------------------------------|
| Appearances, colour, form (according to reference) | FAK-00.1 | Pink, pearlescent, viscous, liquid |
| Odour (according to reference) | FAK-00.2 | Flowery, fruity, powdery, woody |
| Density (20 °C; oscil. U-tube) | REK-02 | 1.0335 – 1.0395 g/cm ³ |
| Refractive index (20 °C) | FAK-14 | 1.35450 – 1.35570 |
| Viscosity C60/2, 20 °C, 2 s ⁻¹ , 60 s | FAK-30.21 | 5'000 – 9'000 mPa·s |
| pH-Value (conc.) | FAK-03 | 5.0 – 5.5 |
| Microbiology (total plate count) | BAL-01 | <10 cfu/g |
| 1.4-Dioxane calculated from raw materials | - | < 5 ppm |

Regulations and tests

SMIXIN's soap is conform to the Cosmetics regulation and to Regulation (EC) No. 1907/2006 (REACH)

Aérial Study: SMIXIN compared the efficiency of its Hand Washing Station with a conventional hand washing cycle. A microbiologist used to hygienic hand wash procedure and with healthy skin washed his contaminated hands with the two methods. The efficacy against the bacteria *Escherichia coli* has been positively tested. The results show that “the test carried out suggests that the SMIXIN system allows saving consumables (soap and water) for effectiveness at least equivalent to the traditional method of hand washing.”

Standard NF-EN-1499 (T-72-501), June 2013. Hygienic handwash. Test method and requirements (phase 2, step 2).

smixin[™]
smart hand washing systems

Contact us!

SMIXIN Ltd.

Rue Centrale 115
PO BOX
2500 Biel/Bienne 7
Switzerland

T +41 32 366 64 00

F +41 32 366 64 03

info@smixin.com